

Love in Bloom

by fresh designs

Finished Quilt Size: 60" x 73 1/2"



A Free Pattern Sheet from

 **Henry Glass & Co.**

49 West 37th Street New York, NY 10018

tel: 212-686-5194 fax: 212-532-3525

New York: 800-294-9495

www.henryglassfabrics.com

Cutting Instructions

Please note: all strips are cut across the width of the fabric from selvage edge to selvage edge.

From EACH of the Green and Red Focal Prints, cut:

- (4) 6 1/2" strips. From (1) strip, cut (5) 6 1/2" x 6 1/2" square. Reserve (4) squares for appliques. Set aside the (3) remaining strips for the outer border.

From the Aqua Rose Print, cut:

- (2) 6 1/2" strips. From (1) strip, cut (3) 6 1/2" x 6 1/2" squares and (1) 6 1/2" x 20" strip. Set aside (1) square for appliqué. Trim the second strip to 6 1/2" x 26 3/4".

From the Pink Rose Print, cut:

- (2) 6 1/2" strips. From (1) strip, cut (1) 6 1/2" x 6 1/2" square and (1) 6 1/2" x 20" strip. Set aside the square for appliqué. Trim the second strip to 6 1/2" x 26 3/4".

From the Pink Heart Print, cut:

- (1) 6 1/2" strip. Recut into (3) 6 1/2" x 6 1/2" squares.

From the Green Heart Print, cut:

- (1) 6 1/2" strip. Recut into (4) 6 1/2" x 6 1/2" squares.

From the Pink Script Print, cut:

- (1) 13 1/4" strip. Recut into (1) 13 1/4" x 13 1/4" square and (3) 6 1/2" x 6 1/2" squares.

From the Green Script Print, cut:

- (1) 13 1/4" strip. Recut into (1) 13 1/4" x 13 1/4" square and (4) 6 1/2" x 6 1/2" squares.
 - (1) 6 1/2" strip. Recut into (6) 6 1/2" x 6 1/2" squares.
- From the (10) total squares, set aside (5) for appliques.

From the Red Script Print, cut:

- (21) 1 1/4" strips. Set aside (7) strips for the inner border.
- Recut (14) strips into (82) 1 1/4" x 6 1/2" pieces.

From the Brown Scroll Print, cut:

- (7) 2 1/4" strips for the binding.
- (2) 1 1/4" strips. Recut into (43) 1 1/4" x 1 1/4" squares.

From the Crème Scroll Print, cut:

- (1) 6 1/2" strip. Recut into (6) 6 1/2" x 6 1/2" squares.

From the Red Scroll Print, cut:

- (1) 6 1/2" strip. Recut into (4) 6 1/2" x 6 1/2" squares for appliques.

From EACH of the Pink Stripe and Green Stripe, cut:

- (1) 6 1/2" strip. Recut into (4) 6 1/2" x 6 1/2" squares. Set aside (2) squares for appliques.

From the Pink Bird & Heart Print, cut:

- (3) 6 1/2" strips. Recut (2) strips into (10) 6 1/2" x 6 1/2" squares. Trim the third strip to 6 1/2" x 20".

From the Green Bird & Heart Print, cut:

- (1) 13 1/4" strip. Recut into (1) 13 1/4" x 13 1/4" square and (2) 6 1/2" x 6 1/2" squares.

From the Pink Bird Print, cut:

- (2) 6 1/2" strips. Recut into (7) 6 1/2" x 6 1/2" squares for appliques.

From the Green Bird Print, cut:

- (1) 13 1/4" strip. Recut into (2) 13 1/4" x 13 1/4" squares.

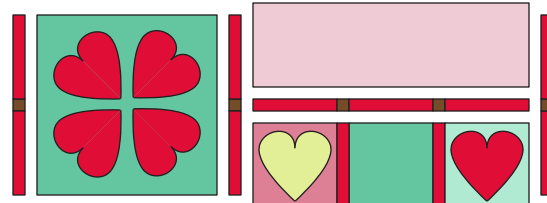
Make the Appliqué Blocks

1. Enlarge the heart pattern 200%. Using the enlarged paper pattern and template plastic, make a template for the heart.
2. Using the template made in step 1, trace (41) heart shapes onto the paper side of the fusible webbing, leaving 1/2" margin between traced motifs. Cut out each motif 1/4" beyond its traced line.
3. Following the manufacturer's instructions, fuse the traced hearts from step 2 to the wrong side of the 6 1/2" squares set aside for the appliques. Cut out each motif on the traced line.
4. Using the quilt pictured on the cover as a guide to fabric pairings and motif placements, remove the paper backing from each heart and fuse it to the right side of a 6 1/2" or 13 1/4" square.
5. Using the decorative machine stitch and thread of your choice, overcast the raw edge of each heart motif.

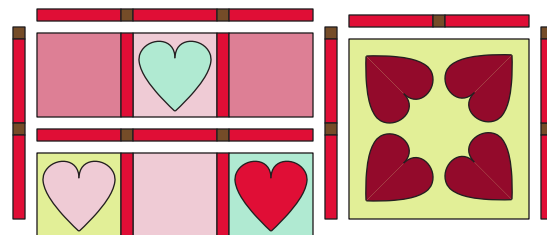
Sewing Instructions

All seams are sewn using 1/4" seam allowance with pieces held right sides together and raw edges even. The quilt is assembled in sections. Refer to the instructions for the number and type of units needed for each section and refer to the quilt pictured on the cover for correct fabric placement.

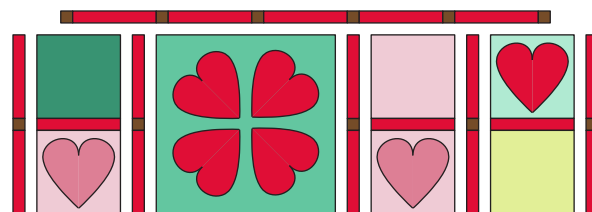
Section 1. Stitch together: (1) 13 1/4" heart block, (2) 6 1/2" heart blocks, (1) 6 1/2" square, (1) 6 1/2" x 20" pink rose print piece, (5) 1 1/4" brown scroll squares, and (11) 1 1/4" x 6 1/2" red heart pieces.



Section 2. Stitch together: (1) 13 1/4" heart block, (3) 6 1/2" heart blocks, (3) 6 1/2" squares, (11) 1 1/4" brown scroll squares, and (18) 1 1/4" x 6 1/2" red heart pieces.

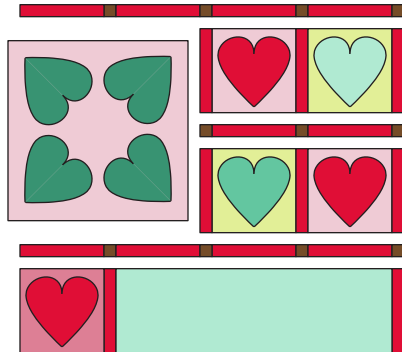


Section 3. Stitch together: (1) 13 1/4" heart block, (3) 6 1/2" heart blocks, (3) 6 1/2" squares, (11) 1 1/4" brown scroll squares, and (18) 1 1/4" x 6 1/2" red heart pieces.

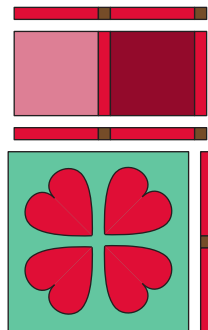


Sewing Instructions (cont.)

Section 4. Stitch together: (1) 13 1/4" heart block, (5) 6 1/2" heart blocks, (1) 6 1/2" x 20" aqua rose print piece, (11) 1 1/4" brown scroll print squares, and (18) 1 1/4" x 6 1/2" red script print pieces.



Section 5. Stitch together: (1) 13 1/4" heart block, (2) 6 1/2" squares, (5) 1 1/4" brown scroll print pieces, and (8) 1 1/4" x 6 1/2" red script print pieces.



Section 6. Referring to the Quilt Assembly Diagram in the next column, stitch section 2 to the bottom of section 1. Stitch section 3 to the bottom of section 2. To assemble, section 6, stitch together: (2) 6 1/2" heart blocks, (2) 1 1/4" x 6 1/2" red script print pieces and (1) 6 1/2" x 26 3/4" aqua rose print strip. Stitch section 6 to the left-hand side of sections 1-3.



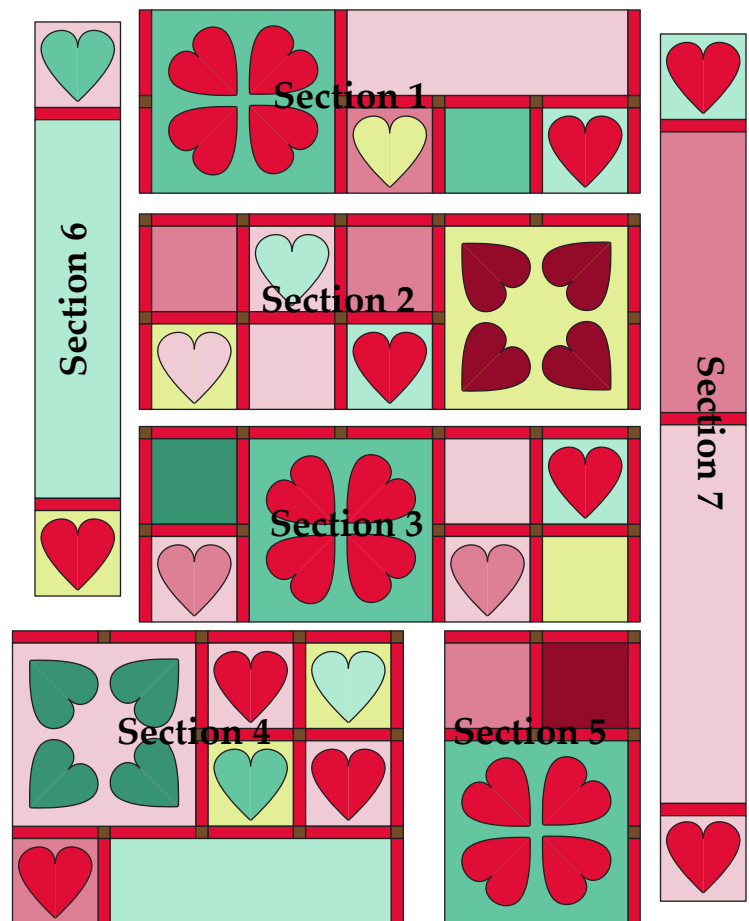
Section 7. Again referring to the Quilt Assembly Diagram in the next column, stitch section 5 to the right-hand side of section 4. Sew this unit to the bottom of sections 1-3 and 6. To assemble section 7, stitch together: (2) 6 1/2" heart blocks, (3) 1 1/4" x 6 1/2" red script print pieces, (1) 6 1/2" x 20" pink bird & heart print strip and (1) 6 1/2" x 26 3/4" pink rose print strip. Stitch section 7 to the right hand side to complete the body of the quilt top.

Side Borders. Trim the selvages from the (7) 1 1/4" red script print strips set aside for the inner border. Sew the strips together end to end to make a long 1 1/4" strip. From this long strip, cut (4) 60 1/2" lengths. Trim the selvages from the 6 1/2" red focal print strips and sew the strips together end to end to make a long 6 1/2" strip. From this long strip, cut (1) 60 1/2" piece and (1) 47" piece. Repeat this procedure for the green focal print strips. Stitch (1) 60 1/2" red script print strip to the 60 1/2" red focal print border strip. Stitch this unit to the left-hand side of the quilt top with the red strip closest to the center. Repeat this procedure to make the right-hand side borders.

Top and Bottom Borders. Stitch a 60 1/2" red border strip to the top and bottom of the quilt top. Stitch a 1 1/4" x 6 1/2" red script print piece and a 6 1/2" heart block to each end of each 47" focal print strip, noting the orientation of the heart blocks. Stitch the pieced border units to the top and bottom to complete the quilt top.

Finishing. Layer the quilt top with batting and backing and quilt as desired. Trim the finished quilt and bind using the 2 1/4" brown scroll print strips.

Quilt Assembly Diagram



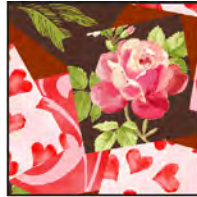
Love in Bloom

Finished Quilt Size: 60" x 73 1/2"

Materials for the Quilt Top and Binding



9225-66
Green Focal
Print
7/8 yard



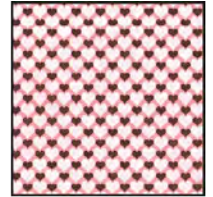
9225-88
Red Focal
Print
7/8 yard



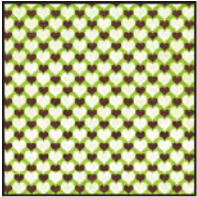
9226-12
Aqua Rose
Print
1/2 yard



9226-22
Pink Rose
Print
1/2 yard



9227-22
Pink Heart
Print
1/4 yard



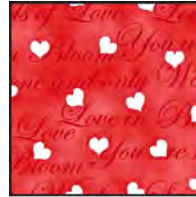
9227-66
Green Heart
Print
1/4 yard



9228-22
Pink Script
Print
1/2 yard



9228-66
Green Script
Print
3/4 yard



9228-88
Red Script
Print
7/8 yard



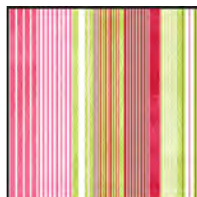
9229-33
Brown Scroll
Print
5/8 yard



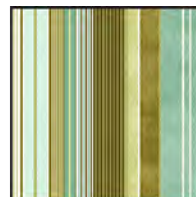
9229-44
Crème Scroll
Print
1/4 yard



9229-88
Red Scroll
Print
1/4 yard



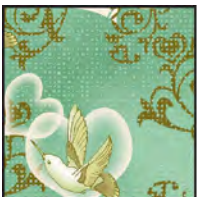
9230-22
Pink Stripe
1/4 yard



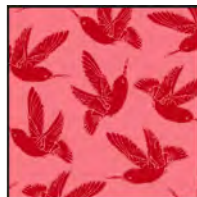
9230-66
Green Stripe
1/4 yard



9231-22
Pink Bird
& Heart
Print
3/4 yard



9231-66
Green Bird
& Heart
Print
1/2 yard



9232-22
Pink Bird
Print
1/2 yard



9232-66
Green Bird
Print
1/2 yard

Additional Materials for the Project

4 3/4 yards coordinating fabric for quilt backing
68" x 82" piece of batting
template plastic
threads to blend with appliqué fabrics
usual rotary cutting and sewing supplies
3 yards of 20" wide double-sided,
lightweight, fusible webbing