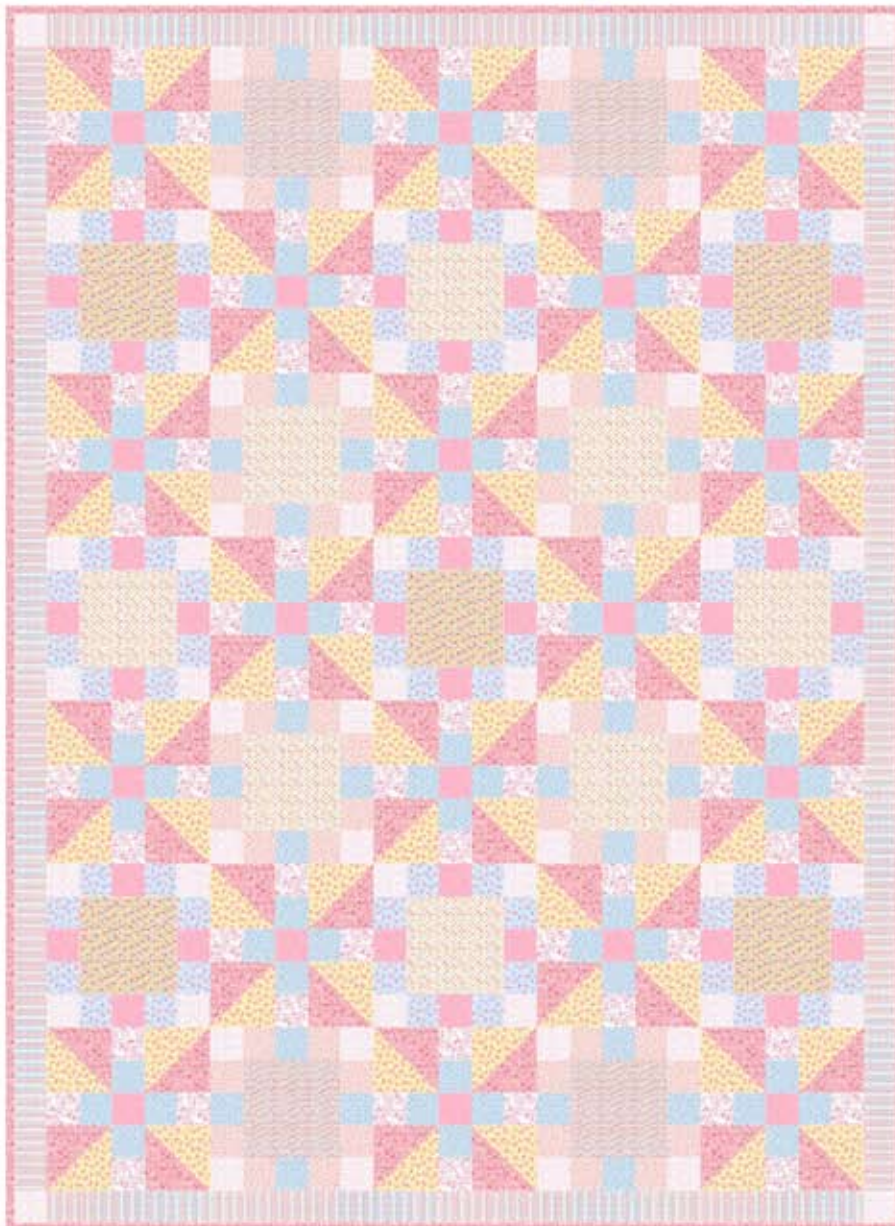


Pink Ribbons of Hope

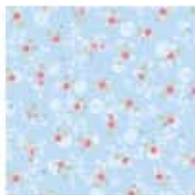
KN Karen Neuburger® ©2009 RNA Holdings LLC



Approximately 55 x 75"



20906-P 1 3/4 yd



20907-B 3/4 yd



20907-P 1/2 yd



20908-B 1/2 yd



20908-S 1 1/4 yd



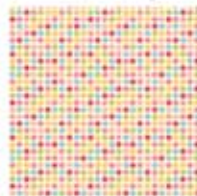
20909-P 5 yds



20910-P 3/4 yd



20911-Z 1/2 yd



20912-S 1/2 yd



20912-Z 1/2 yd



21014-P 1/2 yd



21014-Z 1/2 yd

Ribbons of Hope

Designed by Peggy Smith Welchert

Skill level: Intermediate

Finished Block Size: 9½"

Size 55" x 75"

Cutting:

21014P (**Fabric A**) cut 4 - 2 ½ " strips across the width of the fabric (WOF).

20907P (**Fabric B**) cut 4 - 2 ½ " strips WOF.

20908B (**Fabric C**) cut 5 - 2 ½ " strips WOF.

20911Z (**Fabric D**) cut 5 - 2 ½ " strips WOF.

20907B (**Fabric E**) cut 7 - 2 ½ " strips WOF.

21014Z (**Fabric F**) cut 5 - 2 ½ " strips WOF.

20910P (outer border) cut 7 - 2 ½ " strips WOF.

20906P cut 5 - 5" strips WOF, sub cut into 36 (5") squares. Set aside the remaining fabric for the binding.

20908S cut 5 - 5" strips WOF, sub cut into 36 (5") squares.

20912Z cut 1 - 6 ½ " strip WOF, sub cut into 4 (6 ½ ") squares.

20912S cut 1 - 6 ½ " strip WOF, sub cut into 5 (6 ½ ") squares.

20909P cut 2 - 6 ½ " strips WOF, sub cut into 8 (6 1/2") squares.

Create Strip Sets:

Sew the 2½ " strips together into sets in the order below:

Strip set 1: D, E, A, E, D

Strip set 2(Make 2): D, E

Strip set 3: F, B, E, B, F

Strip set 4: B, E, B

Strip set 5: F, C, A, C, F

Strip set 6: C, A, C

Sub cut each strip into 2½ " units marking each pile with strip set number. Set aside.

Block A

Half Square Triangles (HST) – Mark the *wrong* side of each 5" square cut from 20908S on the diagonal. Place a 5" 20906P square and a marked 20908S square, right sides together. Sew ¼ " each side of the diagonal line. Cut on diagonal line. Press seam toward 20906P. Repeat to make 72 half squares.

Sew one HST to both sides of one strip set 2 as shown in illustration 1, noting placement of colors. Repeat making 36 HST units. Press seams toward triangles.

Assemble Block A - Sew one HST unit to either side of a strip set 1, noting placement of colors. Press seams toward HST Unit. (A few extra strip set 1's may need to be made by cutting and sewing together 2½ " squares cut from extra strips.) Make 18.



Illustration 1- Half Square Triangle Unit



Block A

Block B

Sew one strip set 4 to either side of one 6 ½ " 20912Z square (illustration 2). Press away from center. Sew a strip set 5 to top and bottom to create Block B. Press towards center. Repeat to make 4 Block B.

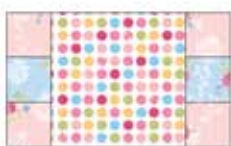


Illustration 2



Block B

Block C

Sew one strip set 4 to either side of one 6 ½ " 20909P square. (A few extra strip set 4's may need to be made by cutting and sewing together 2½ " squares cut from extra strips.) Press away from center. Sew a strip set 5 to top and bottom to create Block C. Press towards center. Repeat making a total of 4 Block C.



Illustration 3



Block C

Block D

Sew one strip set 6 to either side of one 6 ½ " 20912S square. Press away from center. Sew a strip set 5 to top and bottom to create Block D. Press towards center. Repeat making a total of 5 Block D.



Illustration 4



Block D

Block E

Sew one strip set 6 to either side of one 6 ½ " 20912S square. Press away from center. Sew a strip set 5 to top and bottom to create Block E. (A few extra strip set 5's may need to be made by cutting and sewing together 2½ " squares cut from extra strips.) Press towards center. Repeat making a total of 4 Block E.



Block E

Assemble Quilt top

Sew blocks together in rows as indicated below. Press seams toward A blocks, then sew rows together. Press seams toward Row 1, Row 3, Row 5 and Row 7.

A B A B A-Row 1

D A E A D-Row 2

A C A C A-Row 3

E A D A E-Row 4

A C A C A-Row 5

D A E A D-Row 6

A B A B A-Row 7

Borders

Sew 20910P strips together end to end creating a long 2½" strip. Press seams toward one side. Measure quilt top crosswise at the center row and cut 2 pieces of the 20910P long strip to that measurement. Cut four 2½" squares from a 21014Z strip. Sew one 2½" to either side of each strip cut from 20910P. Press toward stripe fabric. Set aside.

Measure quilt top lengthwise down the center row. Cut two pieces of the remaining strip 20910P to that measurement. Sew one to either long side of the top matching centers and ends of top and border pieces. Press toward border.

Sew the pieces set aside to top and bottom of top and press toward border.

Layer and quilt as desired. Bind.

www.QuiltingTreasures.com

While all possible care has been taken to assure the accuracy of this pattern, we are not responsible for printing errors or the way in which individual work varies.