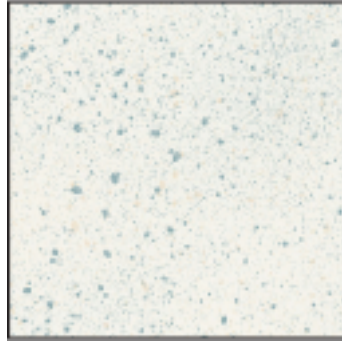


I Love Snow

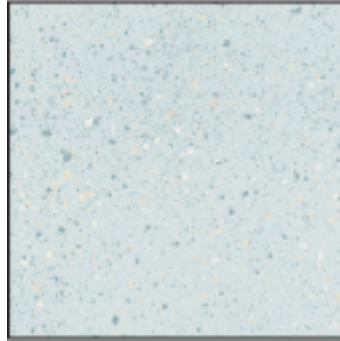
Fabrics in the Collection



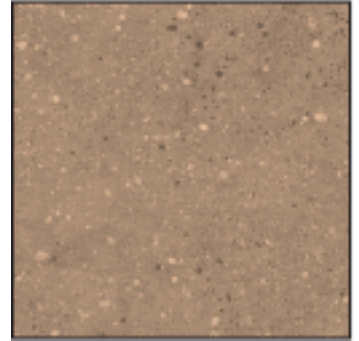
5688-11
Snowmen Patches



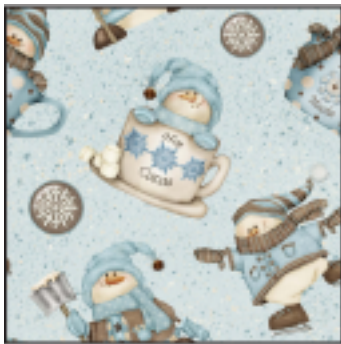
5689-1
Pale Blue Tonal



5689-11
Blue Tonal



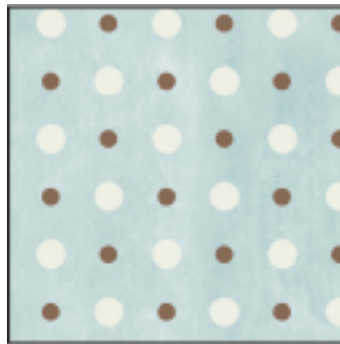
5689-33
Brown Tonal



5690-11
Blue Snowmen



5690-13
Pale Blue Snowmen



5691-11
Blue Dot



5691-13
Cream Dot



5692-13
Printed Stripe



5693-1
Blue Snowflakes



5693-33
Brown Snowflakes

I Love Snow

Quilt Designed by: Cate Tallman-Evans
Finished Quilt Size: 56" x 76"

Materials

5/8 yard	Snowmen Patches	(5688-11)
1/4 yards	Pale Blue Tonal	(5689-1)
1/4 yard	Blue Tonal	(5689-11)
1/2 yard	Brown Tonal	(5689-33)
1 1/4 yards	Pale Blue Snowmen	(5690-13)
1 1/4 yards	Blue Dot	(5691-11)
1/4 yard	Cream Dot	(5691-13)
3/4 yard	Printed Stripe	(5692-13)
1/4 yard	Blue Snowflakes	(5693-1)
1 yard	Brown Snowflakes	(5693-33)
	<i>(includes binding)</i>	
3 3/4 yards	Blue Snowmen	(5690-11)
	<i>(for quilt backing)</i>	

Cutting Instructions

Please note: all strips are cut across the width of the fabric from selvage edge to selvage edge.

From the snowmen patches, cut:

- (2) 6 1/2" strips with a set of snowman patches centered vertically in each strip. Trim each strip to 32 1/2" long with (5) snowman patches centered horizontally in each trimmed strip.

From EACH of the pale blue and blue tonals, cut:

- (2) 2 1/2" strips. Trim each strip to 32 1/2" long.

From the brown tonal, cut:

- (5) 2 1/2" strips for the inner border.

From the pale blue snowmen, cut:

- (6) 6 1/2" strips for the middle border.

From the blue dot, cut:

- (7) 4 1/2" strips for the outer border.

- (2) 2 1/2" strips.

From the cream dot, cut:

- (2) 2 1/2" strips. Trim each strip to 32 1/2" long.

From the printed stripe, cut:

- (1) 12 1/2" strip with a full set of snowmen motifs centered vertically in the strip. Trim the strip to 32 1/2" long.

From the blue snowflakes, cut:

- (2) 2 1/2" strips trim each strip to 32 1/2" long.

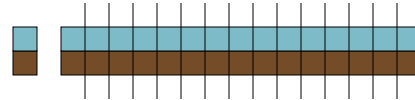
From the brown snowflakes, cut:

- (11) 2 1/2" strips. Set aside (7) strips for the binding.

Sewing Instructions

All seams are sewn using 1/4" seam allowance with pieces held right sides together and raw edges even.

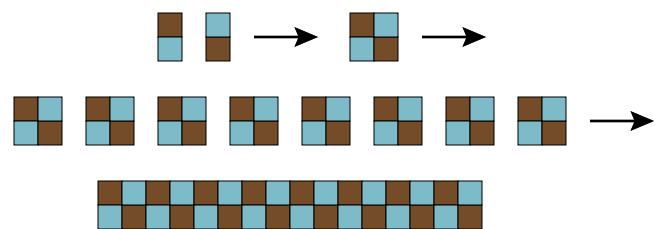
1. Sewing lengthwise, stitch a 2 1/2" brown snowflakes strip to a 2 1/2" blue dot strip. Press the seam toward the brown snowflakes strip. Repeat to make a second strip set. Cut each strip set into (16) 2 1/2" wide segments to yield a total of (32) segments.



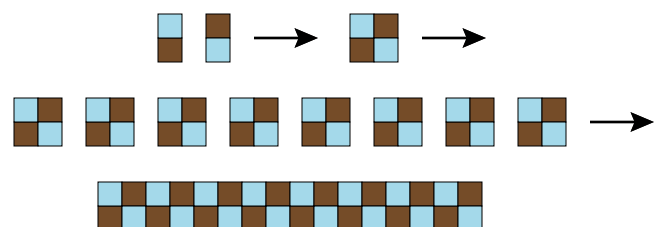
2. Sewing lengthwise, stitch a 2 1/2" brown snowflakes strip to a 2 1/2" blue tonal strip. Press the seam toward the brown snowflakes strip. Repeat to make a second strip set. Cut each strip set into (16) 2 1/2" wide segments to yield a total of (32) segments.



3. Stitch together (2) segments from step 1 to make (1) blue dot and brown snowflakes four-patch as shown. Repeat to make a total of (16) four-patch units. Stitch together (8) four-patch units as shown to make the top row of the quilt top. Repeat to make a second unit for the bottom row.



4. Stitch together (2) segments from step 2 to make (1) blue tonal and brown snowflakes four-patch as shown. Repeat to make a total of (16) four-patch units. Stitch together (8) four-patch units as shown to make a pieced row of the quilt top. Repeat to make a second identical unit.



I Love Snow

Quilt Assembly

Please use the quilt on the cover as a visual reference for all steps in this section.

1. To make the center section of the quilt: stitch 2 ½" x 32 ½" cream dot strips to the top and bottom of the 12 ½" x 32 ½" printed stripe strip. Press the seams toward the cream dot strips.

2. To make the top section of the quilt: stitch a 2 ½" x 32 ½" blue snowflakes strip to the top and a 2 ½" x 32 ½" pale blue tonal strip to the bottom of a 6 ½" x 32 ½" snowmen patches strip. Press the strips away from the snowmen strip. Noting orientation, stitch a pieced blue dot and brown snowflakes row to the top of the snowmen unit. Sew a blue tonal and brown snowflakes pieced row to the bottom of this unit, again noting orientation.

3. To make the bottom section of the quilt: stitch a 2 ½" x 32 ½" pale blue tonal strip to the top and a 2 ½" x 32 ½" blue snowflakes strip to the bottom of a 6 ½" x 32 ½" snowman patches strip. Noting orientation, stitch a pieced blue tonal and brown snowflakes row to the top of the snowmen unit. Sew a blue dot and brown snowflakes pieced row to the bottom of this unit, again noting orientation.

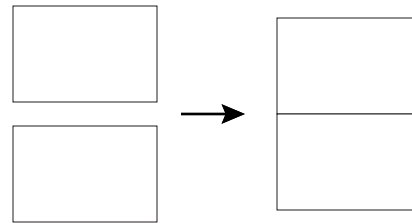
4. Referring to the quilt pictured on the cover, stitch the three sections of the quilt together, noting orientation of each section.

5. Trim the selvages from (3) of the 2 ½" brown tonal strips and stitch the strips together end to end to make a long 2 ½" strip. From this long strip, cut (2) 52 ½" lengths (*if your measurements are different, cut to fit your quilt top*). Sew these lengths to the left and right sides of the quilt top. Trim the remaining (2) 2 ½" brown tonal strips to 36 ½" long (*if your measurements are different, cut to fit your quilt top*). Sew these strips to the top and bottom of the quilt top.

6. Trim the selvages from the 6 ½" pale blue snowmen strips and sew the strips together end to end to make a long 6 ½" strip. From this long strip, cut (2) 56 ½" and (2) 48 ½" lengths (*if your measurements are different, cut to fit your quilt top*). Stitch the longer pieces to the left and right sides of the quilt top. Sew the shorter pieces to the top and bottom.

7. Trim the selvages from the 4 ½" blue dot strips and sew the strips together end to end to make a long 4 ½" strip. From this long strip, cut (2) 68 ½" and (2) 56 ½" lengths (*if your measurements are different, cut to fit your quilt top*). Stitch the longer pieces to the left and right sides of the quilt top. Sew the shorter pieces to the top and bottom.

8. From the backing yardage, cut (2) 64" lengths. Remove the selvages and stitch the two lengths together along the 64" sides to create a 64" x 84" panel for the backing.



9. Layer the completed quilt top with batting and backing and quilt as desired.

10. Trim the batting and backing even with the outer edges of the quilt top and bind using the 2 ½" brown snowflakes strips.

